

NEARMAP FOR GOVERNMENT

OCT 2021 | ROZELLE, NSW AU



Transport + Infrastructure Planning and Management



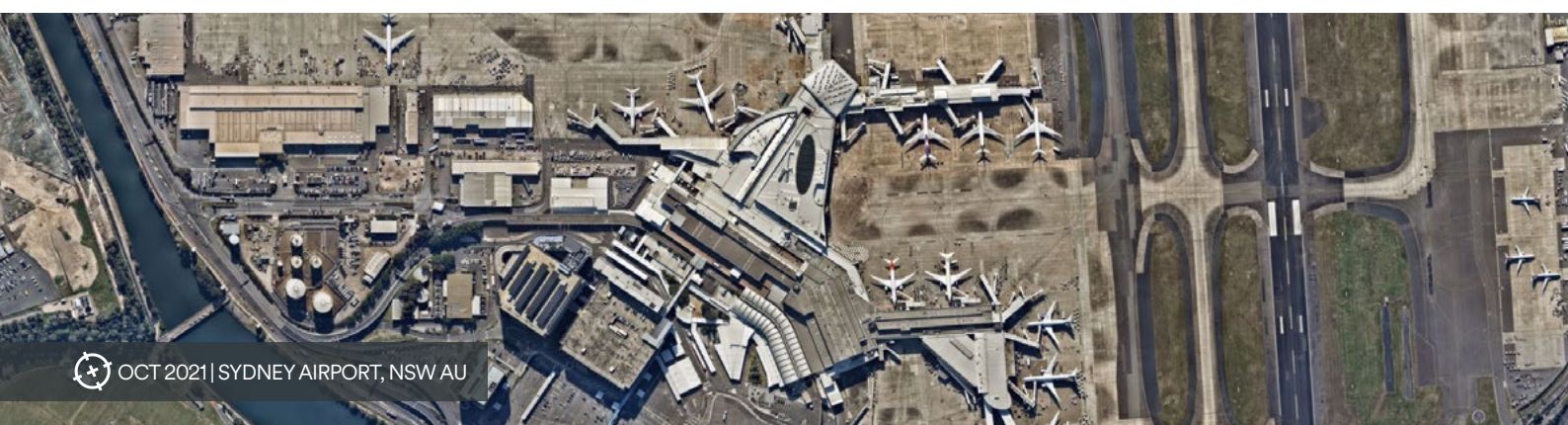
Public Safety and Emergency Management



Urban Planning, Compliance and Asset Management



Environmental Planning and Management



OCT 2021 | SYDNEY AIRPORT, NSW AU

250+ GOVERNMENT AGENCIES ALREADY RELY ON NEARMAP



HISTORICAL
Up to **10+** years of historical imagery



REMOTE ACCESS
Cloud-based imagery for fewer site visits



HIGH-RES
Imagery captured at a **5.5-7.5cm** resolution

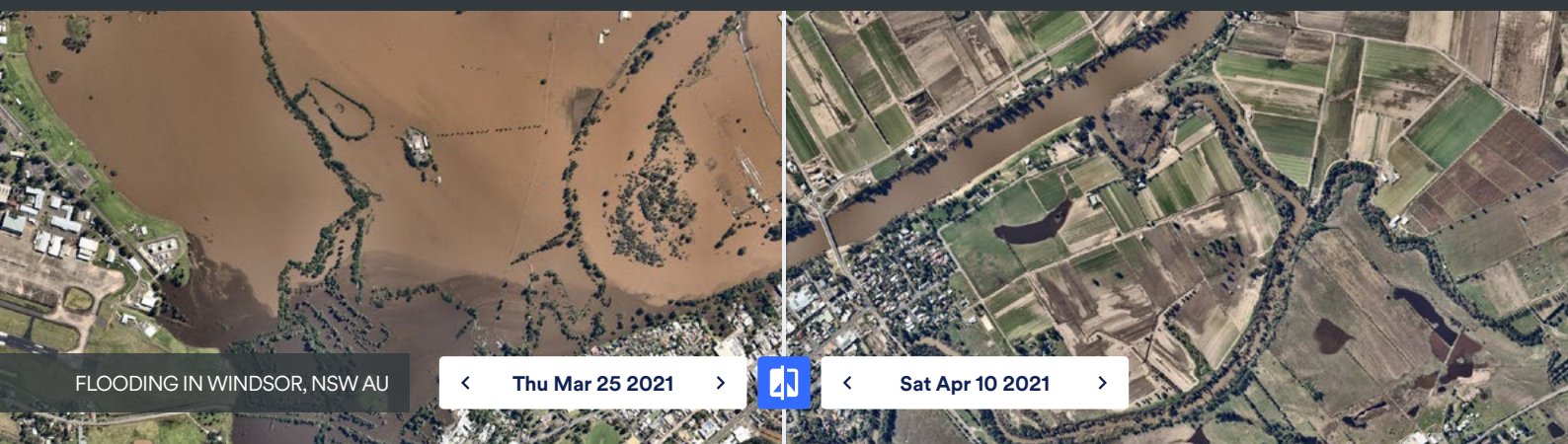


CURRENT
Updated up to **6 times** per year



WIDE-SCALE
Coverage that spans **over 90%** of Australia's population

RESPOND QUICKLY WITH OUR POST-CATASTROPHE PROGRAM



FLOODING IN WINDSOR, NSW AU

Thu Mar 25 2021

Sat Apr 10 2021

47,000+KM²*
ALREADY COVERED AS PART OF OUR IMPACTRESPONSE PROGRAM

47
CATASTROPHES
CAPTURED SO FAR

82%

OF GOVERNMENT USERS SAY THEY'RE ABLE TO MAKE BETTER-INFORMED DECISIONS SINCE USING OUR PRODUCTS[^]

"Nearmap provides us the solution we need to maximise our resources and provide the greatest benefit to our communities."

Richard Adams, National Director, Disaster Relief Australia

SEAMLESS INTEGRATIONS WITH GIS/CAD APPLICATIONS:



NEARMAP FOR GOVERNMENT:

To learn more about partnering with Nearmap for improved government workflows, visit: www.nearmap.com/government



* Covers both impacted and surrounding areas
[^] Based on a 2018 survey of 644 participants